

Eastpoint Centre

13405 Eastpoint Centre Drive, Louisville, KY 40223

FOR LEASE



- ◆ 17,865 SF Available October 2019
- ◆ Single-Story, Class “A” Office Building
- ◆ No Additional Occupational Tax
- ◆ Beautiful Corporate Headquarters Location
- ◆ Abundant Parking
- ◆ 24/7 Capability
- ◆ Prime East End Location
- ◆ Close to Retail, Services and Restaurants



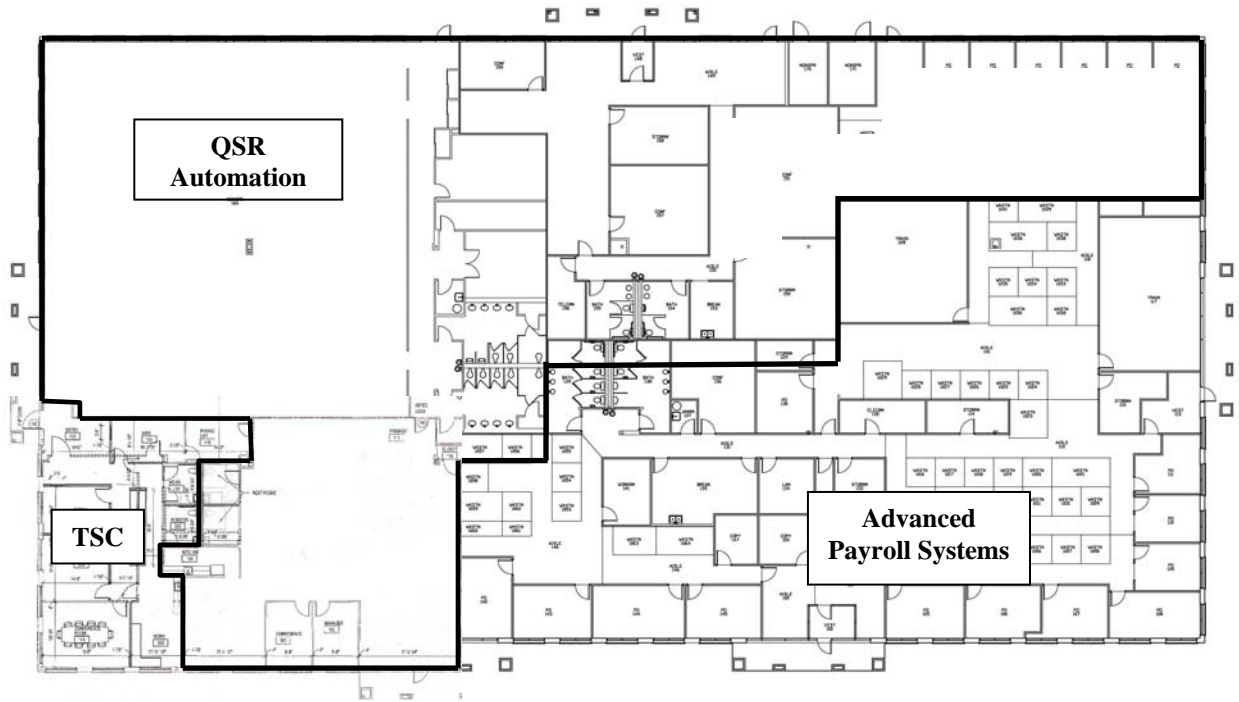
THE SCHROERING COMPANY

Michael Schroering, SIOR, CCIM
13405 Eastpoint Centre Drive, Suite 125
Louisville, KY 40223
(502) 253-4000 / Fax (502) 253-4333
michael@schroering.com
www.schroering.com

Eastpoint Centre

13405 Eastpoint Centre Drive, Louisville, KY

Floor Plan & Aerial



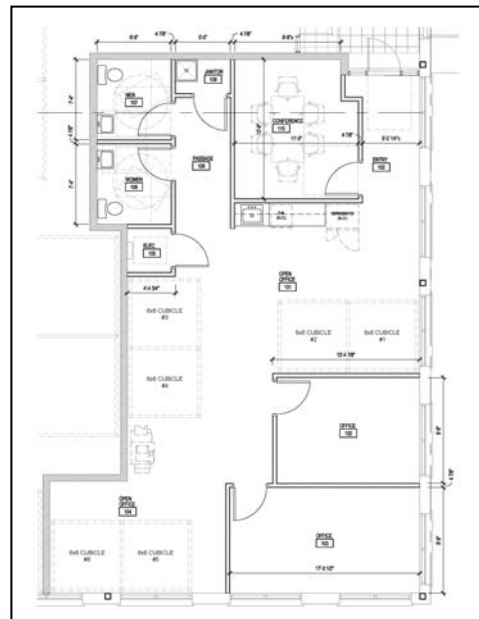
Eastpoint Centre

13425 Eastpoint Centre Drive, Louisville, KY 40223

FOR LEASE



- ◆ 1,555 SF Available (Corner Office)
- ◆ Single-Story, Class "A" Office Building
- ◆ No Additional Occupational Tax
- ◆ Beautiful Corporate Headquarters Location
- ◆ Abundant Parking
- ◆ 24/7 Capability
- ◆ Prime East End Location
- ◆ Close to Retail, Services and Restaurants



THE SCHROERING COMPANY

Michael Schroering, SIOR, CCIM

13405 Eastpoint Centre Drive, Suite 125

Louisville, KY 40223

(502) 253-4000 / Fax (502) 253-4333

michael@schroering.com

www.schroering.com

Eastpoint Centre

13425 Eastpoint Centre Drive, Louisville, KY

Aerial

