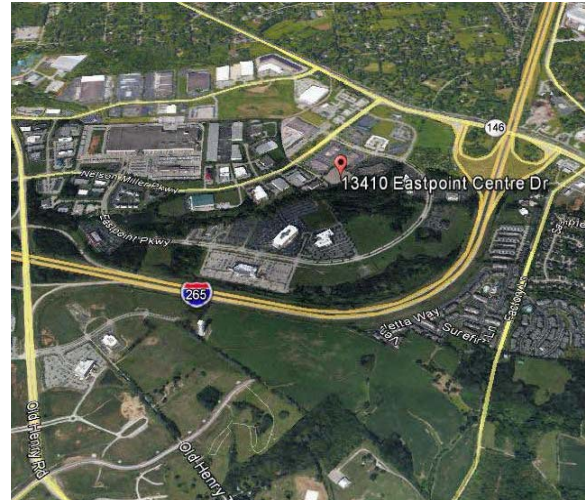


Eastpoint Centre

13410 Eastpoint Centre Drive, Louisville, Kentucky

AVAILABLE



- ◆ Approximately 32,500 RSF To Be Built
- ◆ One-Story, Class “A” Office Building
- ◆ No Additional Occupational Tax
- ◆ Corporate Headquarters Location
- ◆ Close to Retail, Services, and Restaurants
- ◆ Abundant Parking
- ◆ Prime East End Location
- ◆ 24/7 Capability



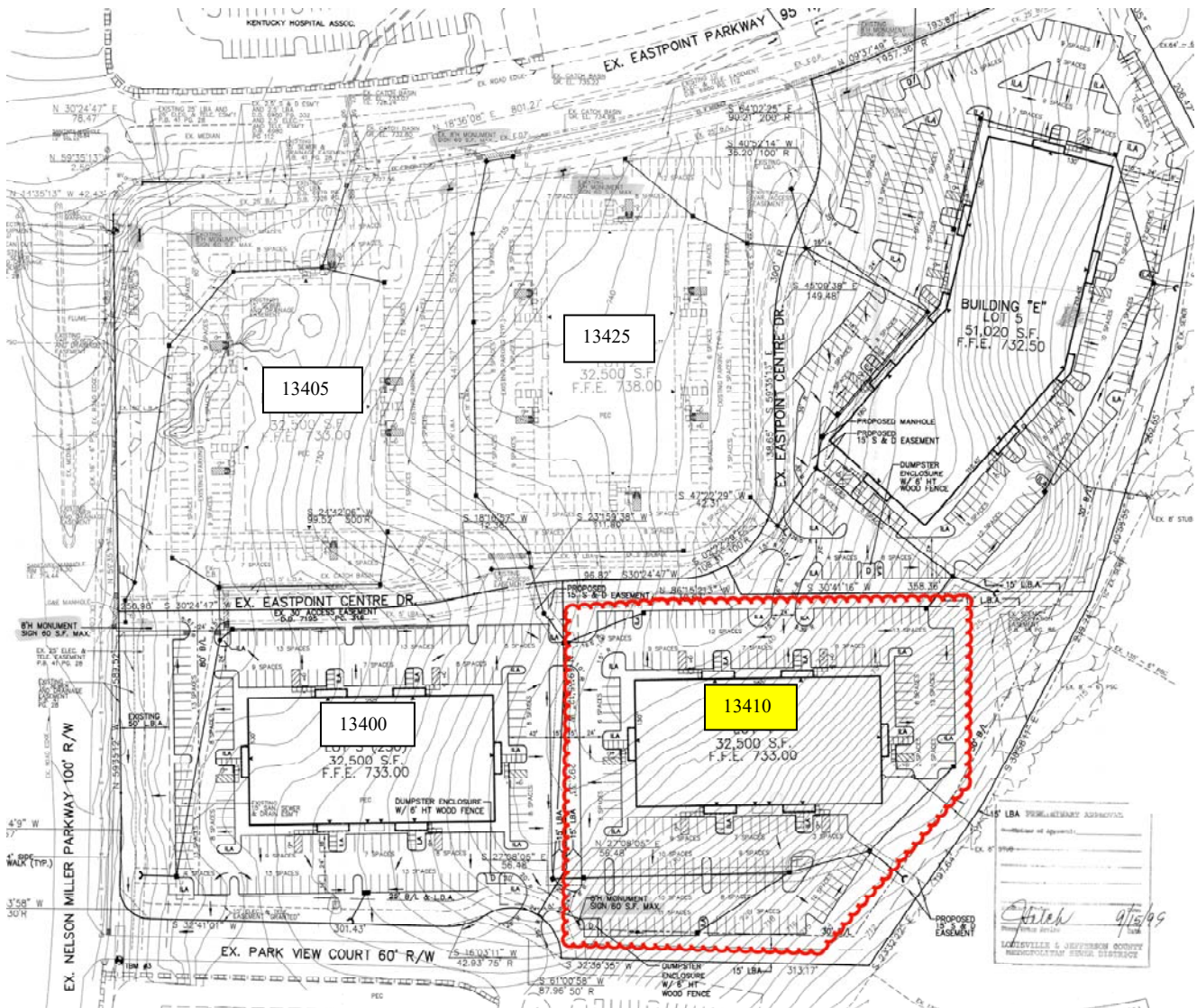
THE SCHROERING COMPANY

Michael Schroering, SIOR, CCIM
13425 Eastpoint Centre Drive, Suite 125
Louisville, KY 40223
(502) 253-4000 Office / (502) 244-0044 Direct
michael@schroering.com
www.schroering.com

Eastpoint Centre

13410 Eastpoint Centre Drive, Louisville, Kentucky

FLOOR PLAN



Michael Schroering, SIOR, CCIM
13425 Eastpoint Centre Drive, Suite 125
Louisville, KY 40223
(502) 253-4000 Office / (502) 244-0044 Direct
michael@schroering.com
www.schroering.com



THE SCHROERING COMPANY